



Ready for ,The Day After‘ It Actually Happens?

AzERE, the Azure Emergency Response Environment, is your line of defense against IT disasters. It creates a secure environment for the fast recovery of your mission-critical services. With a deployment and infrastructure that are fully automated and based on Infrastructure as Code, AzERE ensures that your organization remains resilient in the face of emergencies.

Benefits of AzERE

Independent, Decoupled Environment

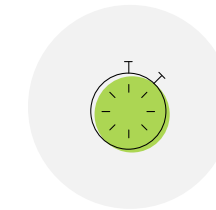
Dedicated, air-gapped backup environment protects critical applications and data from cyber threats by eliminating lateral movement paths.



Standardized Security

Emergency Communication Platform

Immediate provisioning of essential communication tools, like Teams and Exchange, for a dedicated group of users, ensuring business continuity.



Secure and Fast Recovery

Secured Storage

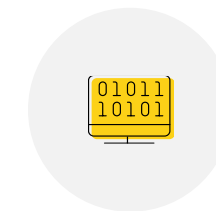
Immutable, versioned storage backs up critical documents and data, ensuring their integrity and availability in the event of a disaster.



Effective Crisis Communication

Autonomous Recovery

Clean and secured infrastructure to restore critical apps and data, without any dependency on other systems, tools, or processes.



100% Automated Deployment (IaC)

Regular Fire Testing

Ensures consistency of backup data and keeps all involved parties in practice, maintaining the reliability of the backup and recovery processes.



glueckkanja.com/en/azere

glueckkanja

Kaiserstraße 39
63065 Offenbach
Germany

glueckkanja.com
info@glueckkanja.com
+49 69 4995520

Florian Stöckl
Azure Lead
florian.stoeckl@glueckkanja.com

